

EASiGate Classic Wide

Wide Aisle 58 kHz AM EAS System

The **EASiGate Classic Wide Aisle** pedestal detection system is a highly flexible single or multiple pedestal detection system.

The Master pedestal contains the electronics and power supply to control the system. On its own, it provides a detection area of 0.9m on each side of the pedestal. For 1m wide entrances, the Master pedestal may be used in combination with a remote aerial to provide extended detection.

For wider entrances, the addition of a Slave pedestal will provide detection between the two pedestals up to 1.9m apart.

Our pedestals may be customised to suit the requirements of individual clients. Please contact us for further details.

Features

- Attractive, low-profile, robust aluminium and ABS construction.
- Compatible with Sensormatic and WG 58kHz hard tags and labels.
- Self-contained electronics for easy installation.
- One, two or multiple pedestal configurations.
- Advanced analogue and Digital Signal Processing (DPS).

Detection*

Labels

- Single Pedestal up to 1.0m each side
- Dual Pedestal up to 2.0m between pedestal 1.0m either side.
- Single Pedestal with remote passive aerial 1.2m.

Ferrite Tags

- Single Pedestal up to 1.2m each side
- Dual Pedestal up to 2.4m between pedestal 1.2m either side.
- Single Pedestal with remote passive aerial 1.4m.

*Detection performance figures are provided as a guidance only and are subject to installation conditions.



EASiGate Classic Wide Aisle

Product Codes

MA3505

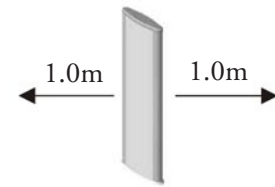
EASiGate Classic Wide Master

MA3507

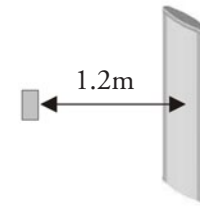
EASiGate Classic Wide Slave

Technical Specifications

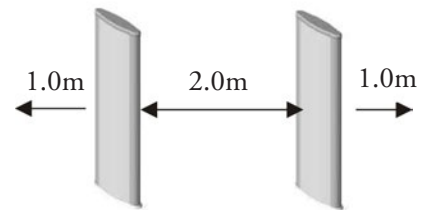
Power Supply	110 or 240V ac.
Inputs	1 x People Counter trigger input (optional). 1 x Inhibit Switch input (optional).
Outputs	2 x 1A voltage-free changeover relay 30V max. 1 x Remote Loudspeaker 1 x 12V auxiliary Output
Software Options	<ul style="list-style-type: none"> • Sensitivity Adjustment • Line synchronisation • Receiver window delay • Hits to alarm • Receiver Noise Floor • Alarm Duration (1 - 10 Seconds) • Alarm Tone (10 possible selections) • Modem Callback numbers • Reset Alarm Counter • Reset People Counter
Configurations	<ul style="list-style-type: none"> • Single pedestal. • Single pedestal with ranger aerial. • Dual pedestal. • Dual pedestal with reduced back field. • Dual pedestal Master Tx Slave Rx. • Dual pedestal Slave Tx Master Rx.
Protection	<ul style="list-style-type: none"> • Primary Power Fuse • Secondary Power Fuses for the supply input • Auxiliary 12V output Fuse • People Counter output Fuse
Regulation	CE Approved I-ETS 300 330: 1994 ETS 300 683: 1997



Single Master Pedestal



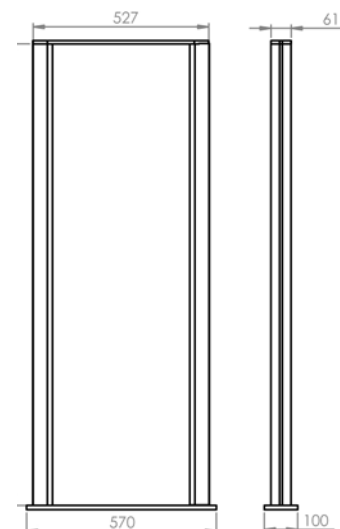
Single Master Pedestal with remote aerial



Dual Pedestals

Dimensions

Width: 527 mm
Height: 1400 mm
Depth: 100 mm



Keep. Track.